

SUTTLES LOGGING, INC.



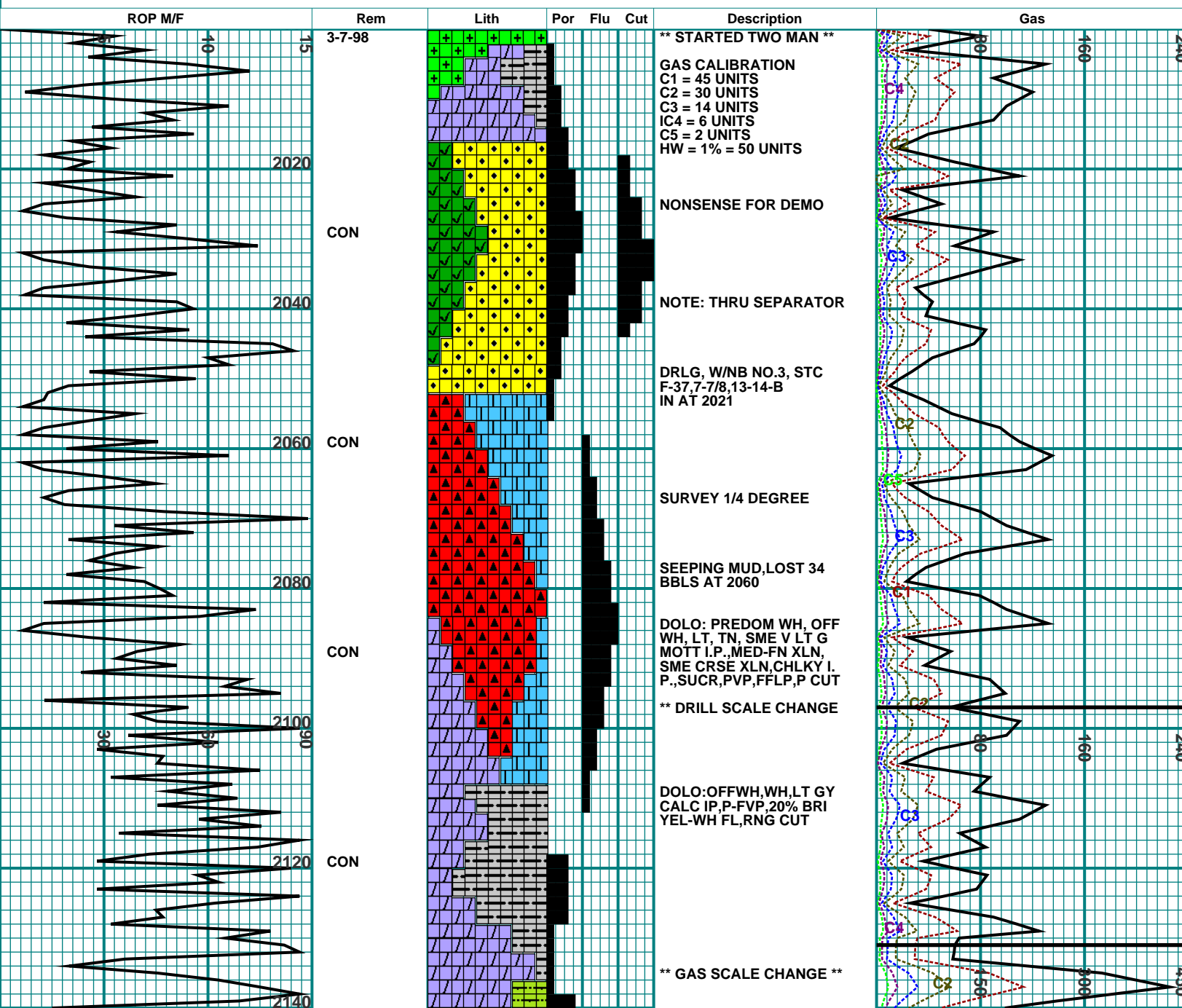
HYDROCARBON WELL LOGGING
GEOLOGICAL CONSULTING

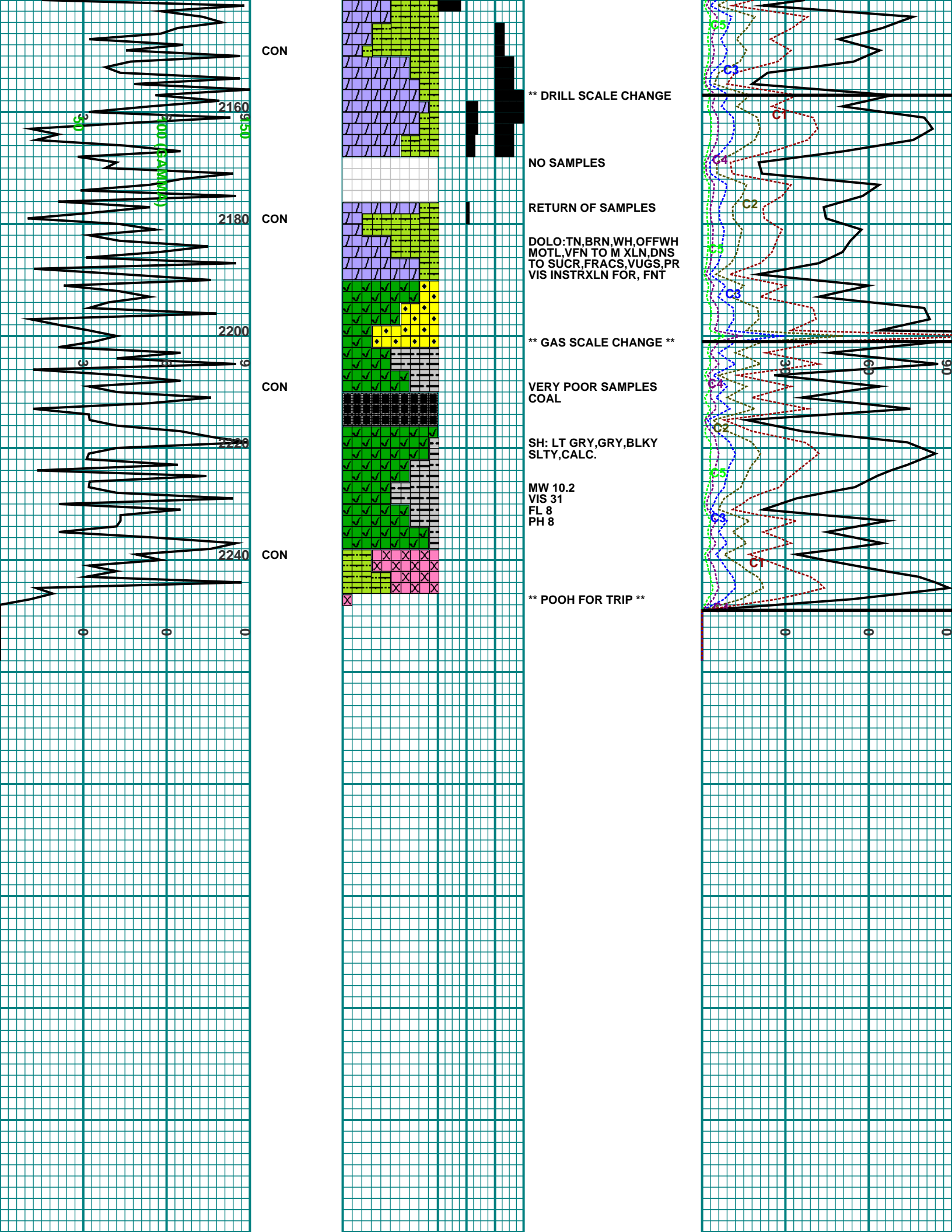
PO Box 10725, Midland, Tx. 79702
(432)687-3148 Fax(432)687-3157

- CO - Circulate Out
- CON - Connection
- DC - Depth Correction
- DS - Directional Survey
- LC - Lost Circulation
- NB - New Bit
- NR - No Returns
- WOB - Weight on Bit

Producer: SUTTLES LOGGING	
Well Name: SLI DEMO LOG	
Location: SEC 1, BLK 1: 1000' FSL & 1000' FEL	
API: 123-456-78900	Permit: 00987-654-321
Survey: GOODENSTRAIGHT SURVEY	Field: BIG BARREN PASTURE
County,St: SOME COUNTY, TX.	
Logger1: LOOKUM ATMUD	Logger2: DESCRIB PATTERNS
Elevation (GL): 2500	(KB): 2515
Depth (Start): 2000	(End): 2250
Date (Start): 7/3/1998	(End): 7/3/1998
Unit #: 123	SLI Job#: 9999-99-999

<ul style="list-style-type: none"> Nothing Salt Dolomite Shale Anhydrite Sand 	<ul style="list-style-type: none"> Chert Lime Stone Silt Stone Coal Granite 	<p>Total Gas —————</p> <ul style="list-style-type: none"> Methane C1 ———— Ethane C2 ———— Propane C3 ———— Butane C4 ———— Pentane C5 ————
---	---	---





CON

2160

** DRILL SCALE CHANGE

NO SAMPLES

CON

2180

RETURN OF SAMPLES

DOLO: TN, BRN, WH, OFFWH
MOTL, VFN TO M XLN, DNS
TO SUCR, FRACS, VUGS, PR
VIS INSTRXLN FOR, FNT

CON

2200

** GAS SCALE CHANGE **

VERY POOR SAMPLES
COAL

CON

2240

** POOH FOR TRIP **

100 (GRAMS)

C5

C4

C2

C3

C3

C4

C2

C5

C3

C1

C5

C4

C2

C5

C3

C1

C5

C4

C2

C5

C3

C1

C5

C4

C2

C5

C3

C1

MW 10.2
VIS 31
FL 8
PH 8

C5

C4

C2

C5

C3

C1

C5

C4

C2

C5

C3

C1

C5

C4

C2

C5

C3

C1